

**CONTACT**

 Dome Solar - 3 rue Marie Anderson  
44 400 Rezé

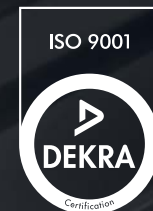
 +33 (0)2 40 67 92 92

 info@dome-solar.com

 [www.dome-solar.com](http://www.dome-solar.com)



**GUARANTEED  
QUALITY**



**MOUNTING SYSTEM FOR  
TRAPEZOIDAL METAL ROOFS  
AND SANDWICH PANELS**

**HELIOS  
B<sup>2</sup>**



The HELIOS B<sup>2</sup> solution allows for a simple and quick installation of a photovoltaic generator on a building roof (either partial or total coverage).

### THE HELIOS B<sup>2</sup> ADVANTAGES



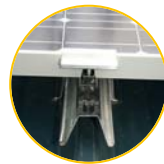
#### RELIABILITY

A robust and durable solution, 10-year warranty. Fully compliant with standards for a simplified integration onto the frame.



#### SIMPLICITY

Only 3 components. Fixing has never been so fast and easy!



#### ADAPTABILITY

Universal clamps for all types of module thicknesses (31 to 50 mm).



#### QUALITY

A robust and durable system, fixed to the building structure (into the purlins).

### TECHNICAL CHARACTERISTICS

<b>USE CONDITIONS</b>	New or renovated roof, covering all or part of the surface Purlin distance : 2m on steel sheet 0.75 and sandwich panel / 1.8 m on steel sheet 0.63
<b>TYPE OF SUPPORT</b>	Standard metal sheet and sandwich panel
<b>MODULE POSITION</b>	Landscape mode
<b>MATERIAL</b>	Galvanized steel
<b>SYSTEM WEIGHT</b>	2-kg/m <sup>2</sup> excluding the module
<b>SUPPORTING STRUCTURE</b>	Metal or wood frameworks
<b>SYSTEM COMPONENTS</b>	Steel rail, steel rail support + EPDM joint and aluminum clamp
<b>OPTION</b>	Terragrif <sup>TM</sup> or Module Grounding Connector (MGC)

